



VISTA LAGO  
RESIDENCES

developed by  
BRIGHT.

**N°15**  
VILLA  
LACERTA





## Nº15 LACERTA

**Villa Lacerta sits on a south-southwest facing plot, the largest plot in the development, and enjoys magnificent views straight across the Mediterranean.**

The carefully thought-out orientation of the villa ensures uninterrupted sea views and complete privacy. The villa has ample terraces which make the most of the fabulous Marbella climate. The landscaped garden can easily accommodate an organic vegetable garden, if so desired. In key parts of the villa the windows disappear into the walls, framing the undisturbed, panoramic views of the idyllic natural surroundings. There are four spacious ensuite bedrooms, with the Master Suite and one guest bedroom having their own private terraces. Built over four floors with a huge basement that can be customised to requirements, this is a perfect family home.

developed by  
**BRIGHT.**







## Nº15 LACERTA

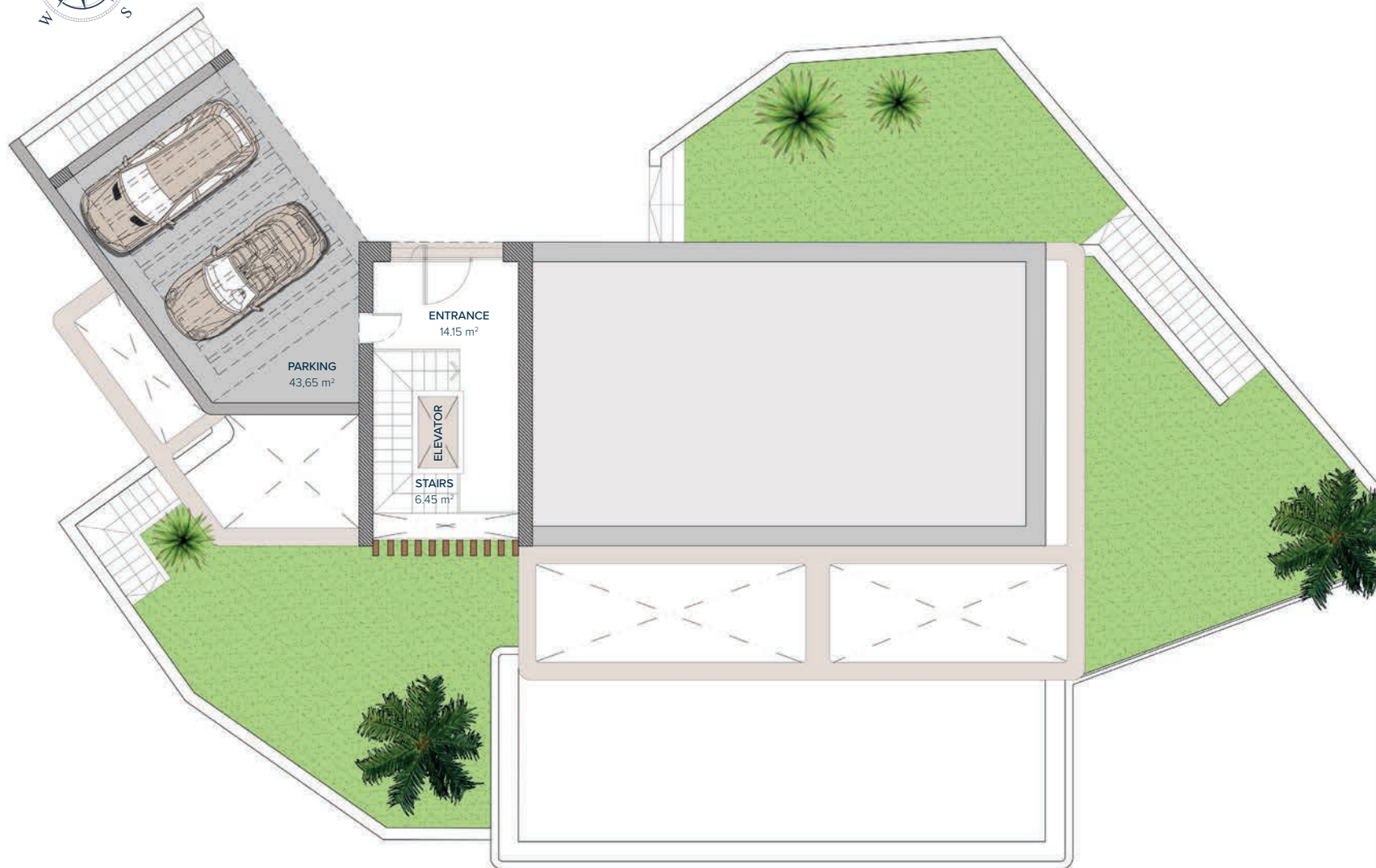
SECOND FLOOR	20,98 m <sup>2</sup>
FIRST FLOOR	144,89 m <sup>2</sup>
GROUND FLOOR	113,05 m <sup>2</sup>
BASEMENT	259,10 m <sup>2</sup>
<b>TOTAL</b>	<b>538,02 m<sup>2</sup></b>

TERRACES	22,60 m <sup>2</sup>
PERGOLAS	38,67 m <sup>2</sup>
CARPORT	45,91 m <sup>2</sup>
COMUN AREAS	8,70 m <sup>2</sup>
<b>TOTAL</b>	<b>653,90 m<sup>2</sup></b>

<b>PLOT</b>	<b>10.005,00 m<sup>2</sup></b>
GARDEN	199,33 m <sup>2</sup>
SWIMMING POOL	56,45 m <sup>2</sup>
<b>TOTAL USEFUL AREA</b>	<b>497,39 m<sup>2</sup></b>
DECREE 218/2005	

developed by  
**BRIGHT.**

These images are not contractual but only for illustrative purposes. The images are subject to technical, legal or commercial modifications approved by the project management or the competent authority. The 3D images corresponding to the facades, common elements, and the rest of the spaces are merely indicative and will be subject to verification or Modification in the technical projects. The furniture of the 3D images is not included and the equipment of the villas will be indicated in the corresponding building and quality specifications. The energy certification corresponds with the one established in the project in process. All the information and documentation will be provided according to the terms established in the Royal Decree 515/1989 and in the rest of the autonomous or state regulations currently in force that could complement the Mentioned Decree.



Entrance	2
	1
	0
	-1



## Nº15 LACERTA SECOND FLOOR

ACCESS 14,15 m<sup>2</sup>

STAIRS 6,45 m<sup>2</sup>

**TOTAL 20,60 m<sup>2</sup>**

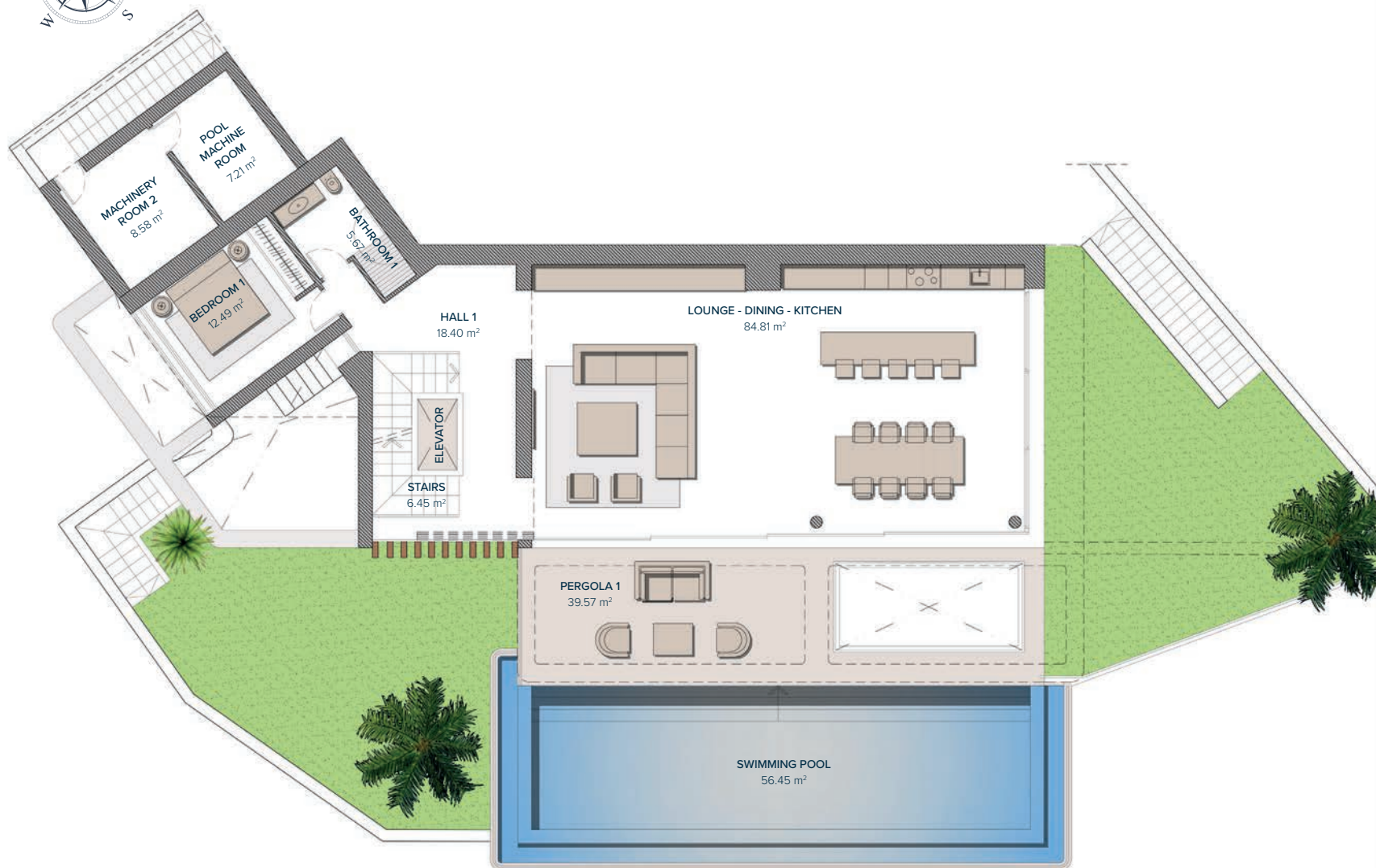
PARKING (PERGOLA) 43,65 m<sup>2</sup>

**TOTAL 43,65 m<sup>2</sup>**

developed by  
**BRIGHT.**

These images are not contractual but only for illustrative purposes. The images are subject to technical, legal or commercial modifications approved by the project management or the competent authority. The 3D images corresponding to the facades, common elements, and the rest of the spaces are merely indicative and will be subject to verification or Modification in the technical projects. The furniture of the 3D images is not included and the equipment of the villas will be indicated in the corresponding building and quality specifications. The energy certification corresponds with the one established in the project in process. All the information and documentation will be provided according to the terms established in the Royal Decree 515/1989 and in the rest of the autonomous or state regulations currently in force that could complement the Mentioned Decree.





## Nº15 LACERTA

### FIRST FLOOR

#### LIVING AREA

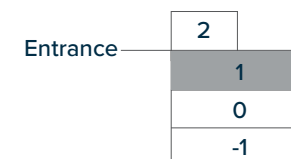
HALL 1	18,40 m <sup>2</sup>
STAIRS	6,45 m <sup>2</sup>
LOUNGE- DINING - KITCHEN	84,81 m <sup>2</sup>
BATHROOM 1	5,67 m <sup>2</sup>
BEDROOM 1	12,49 m <sup>2</sup>
<b>TOTAL</b>	<b>127,82 m<sup>2</sup></b>

#### PERGOLAS & TERRACES

PERGOLA 1	39,57 m <sup>2</sup>
MACHINERY ROOM 2	8,58 m <sup>2</sup>
POOL MACHINE ROOM	7,21 m <sup>2</sup>
<b>TOTAL</b>	<b>39,57 m<sup>2</sup></b>

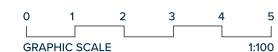
developed by  
**BRIGHT.**

These images are not contractual but only for illustrative purposes. The images are subject to technical, legal or commercial modifications approved by the project management or the competent authority. The 3D images corresponding to the facades, common elements, and the rest of the spaces are merely indicative and will be subject to verification or Modification in the technical projects. The furniture of the 3D images is not included and the equipment of the villas will be indicated in the corresponding building and quality specifications. The energy certification corresponds with the one established in the project in process. All the information and documentation will be provided according to the terms established in the Royal Decree 515/1989 and in the rest of the autonomous or state regulations currently in force that could complement the Mentioned Decree.





Entrance	2
	1
	0
	-1



## Nº15 LACERTA

### GROUND FLOOR

#### BEDROOMS

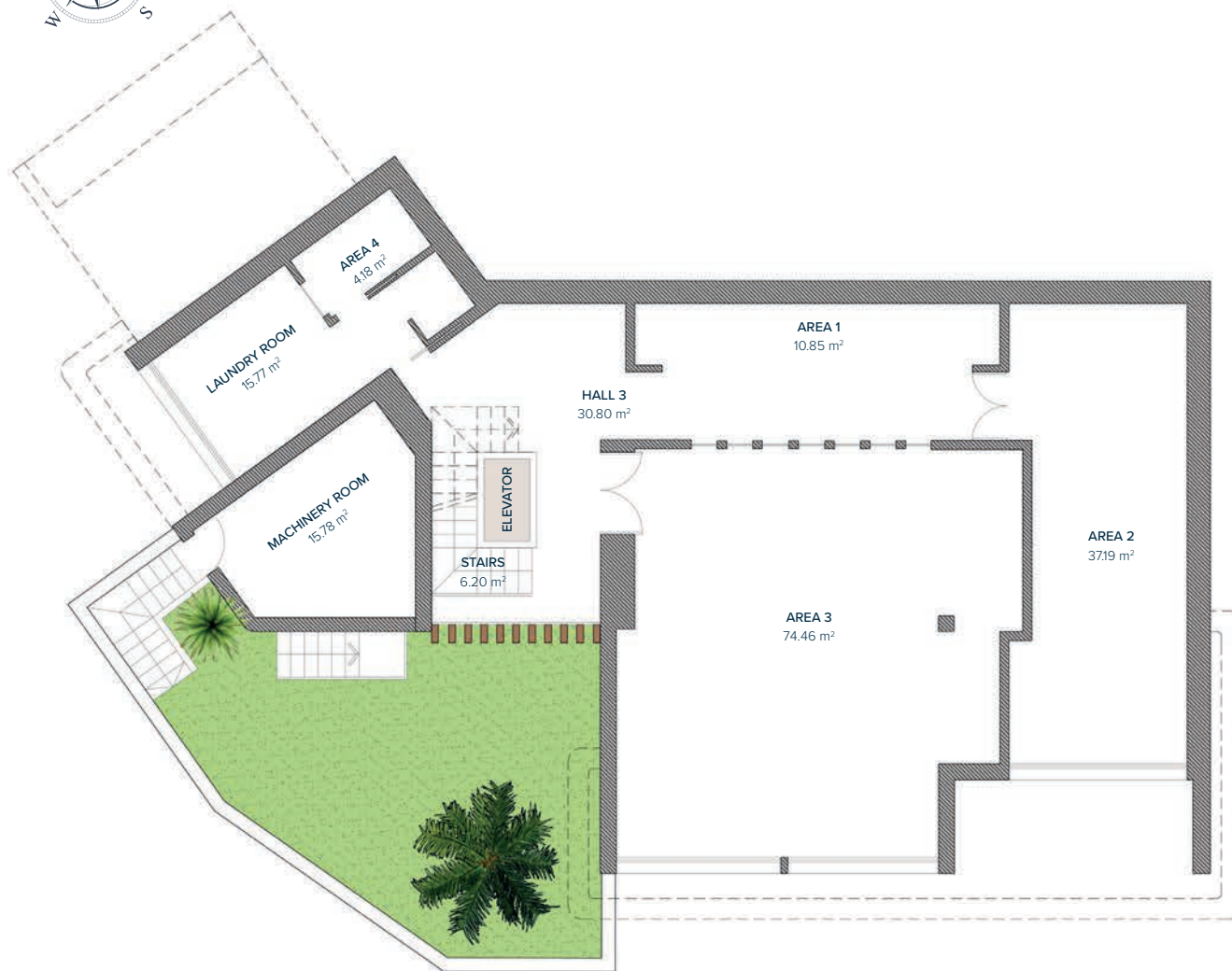
HALL 2	19,26 m <sup>2</sup>
STAIRS	8,87 m <sup>2</sup>
BATHROOM 2	4,35 m <sup>2</sup>
BEDROOM 2	14,72 m <sup>2</sup>
BATHROOM 3	4,60 m <sup>2</sup>
BEDROOM 3	16,42 m <sup>2</sup>
BATHROOM 4	4,95 m <sup>2</sup>
BEDROOM 4	17,76 m <sup>2</sup>
<b>TOTAL</b>	<b>90,93 m<sup>2</sup></b>

#### PERGOLAS & TERRACES

PERGOLA 2	4,72 m <sup>2</sup>
TERRACE 1	17,89 m <sup>2</sup>
<b>TOTAL</b>	<b>22,61 m<sup>2</sup></b>

developed by  
**BRIGHT.**

These images are not contractual but only for illustrative purposes. The images are subject to technical, legal or commercial modifications approved by the project management or the competent authority. The 3D images corresponding to the facades, common elements, and the rest of the spaces are merely indicative and will be subject to verification or Modification in the technical projects. The furniture of the 3D images is not included and the equipment of the villas will be indicated in the corresponding building and quality specifications. The energy certification corresponds with the one established in the project in process. All the information and documentation will be provided according to the terms established in the Royal Decree 515/1989 and in the rest of the autonomous or state regulations currently in force that could complement the Mentioned Decree.



## Nº15 LACERTA

### BASEMENT

HALL 3	30,80 m <sup>2</sup>
STAIRS	6,20 m <sup>2</sup>
AREA 1	10,85 m <sup>2</sup>
AREA 2	37,19 m <sup>2</sup>
AREA 3	74,46 m <sup>2</sup>
AREA 4	4,18 m <sup>2</sup>
LAUNDRY ROOM	15,77 m <sup>2</sup>
MACHINERY ROOM	15,78 m <sup>2</sup>
PATIO (ELEVATOR)	1,80 m <sup>2</sup>
<b>TOTAL</b>	<b>197,03 m<sup>2</sup></b>

Entrance	2
	1
	0
	-1

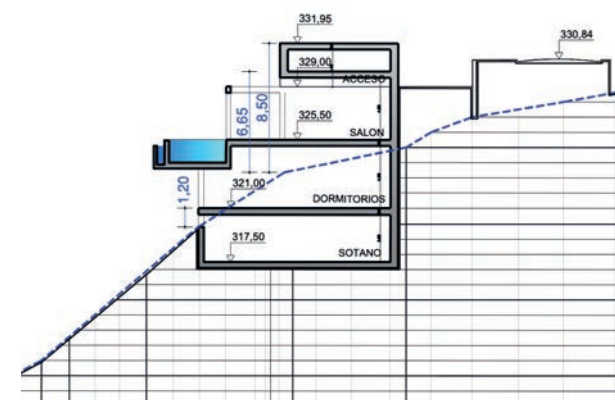
developed by  
**BRIGHT.**

These images are not contractual but only for illustrative purposes. The images are subject to technical, legal or commercial modifications approved by the project management or the competent authority. The 3D images corresponding to the facades, common elements, and the rest of the spaces are merely indicative and will be subject to verification or Modification in the technical projects. The furniture of the 3D images is not included and the equipment of the villas will be indicated in the corresponding building and quality specifications. The energy certification corresponds with the one established in the project in process. All the information and documentation will be provided according to the terms established in the Royal Decree 515/1989 and in the rest of the autonomous or state regulations currently in force that could complement the Mentioned Decree.





Nº15 LACERTA





developed by  
**BRIGHT.**

Tel: (+34) 648 981 111 | [www.by-bright.com](http://www.by-bright.com)