



VISTA LAGO  
RESIDENCES

developed by  
BRIGHT.

Nº2

VILLA SURYA





## Nº2 VILLA SURYA

**Villa Surya sits on a corner south-east facing plot that has fabulous views overlooking Marbella.**

The carefully thought-out orientation of the villa ensures uninterrupted sea views and complete privacy. The villa has a large pool and generous terraces, making the most of the fabulous Marbella climate. In key parts of the villa the windows disappear into the walls, framing the undisturbed, panoramic views of the idyllic natural surroundings. There are four spacious ensuite bedrooms, with the Master Suite enjoying its own private terrace. Built over three floors with the entrance and communal living areas on the first floor and the bedrooms on the ground floor, this is a magnificent family home.

developed by  
**BRIGHT.**





## Nº2 VILLA SURYA

GROUND FLOOR	110,78 m <sup>2</sup>
FIRST FLOOR	136,14 m <sup>2</sup>
BASEMENT	251,36 m <sup>2</sup>
<b>TOTAL</b>	<b>498,28 m<sup>2</sup></b>

PORCHES	3,29 m <sup>2</sup>
TERRACES	38,18 m <sup>2</sup>
PERGOLAS	46,00 m <sup>2</sup>
CARPORT	39,33 m <sup>2</sup>
COMMON AREA	8,70 m <sup>2</sup>
<b>TOTAL</b>	<b>650,02 m<sup>2</sup></b>

<b>PLOT</b>	<b>2.406,00 m<sup>2</sup></b>
GARDEN	106,64 m <sup>2</sup>
SWIMMING POOL	63,78 m <sup>2</sup>
<b>TOTAL USEFUL AREA</b>	<b>472,71 m<sup>2</sup></b>
DECREE 218/2005	

developed by  
**3 BRIGHT.**

These images are not contractual but only for illustrative purposes. The images are subject to technical, legal or commercial modifications approved by the project management or the competent authority. The 3D images corresponding to the facades, common elements, and the rest of the spaces are merely indicative and will be subject to verification or Modification in the technical projects. The furniture of the 3D images is not included and the equipment of the villas will be indicated in the corresponding building and quality specifications. The energy certification corresponds with the one established in the project in process. All the information and documentation will be provided according to the terms established in the Royal Decree 515/1989 and in the rest of the autonomous or state regulations currently in force that could complement the Mentioned Decree.





## Nº2 VILLA SURYA FIRST FLOOR

### LIVING AREA

MAIN HALL	16,35 m <sup>2</sup>
STAIRS	6,50 m <sup>2</sup>
LOUNGE- DINING-KITCHEN	84,95 m <sup>2</sup>
BATHROOM 1	5,65 m <sup>2</sup>
BEDROOM 1	12,49 m <sup>2</sup>
<b>TOTAL</b>	<b>126,60 m<sup>2</sup></b>

### ACCESS & TERRACES

PORCH ACCESS	3,29 m <sup>2</sup>
PARKING (PERGOLA)	39,60 m <sup>2</sup>
TERRACE 1	6,55 m <sup>2</sup>
PERGOLA 1	49,03 m <sup>2</sup>
SWIMMING POOL	63,78 m <sup>2</sup>
<b>TOTAL</b>	<b>162,25 m<sup>2</sup></b>

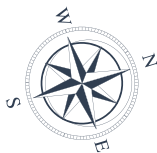
developed by  
**3 BRIGHT.**

These images are not contractual but only for illustrative purposes. The images are subject to technical, legal or commercial modifications approved by the project management or the competent authority. The 3D images corresponding to the facades, common elements, and the rest of the spaces are merely indicative and will be subject to verification or Modification in the technical projects. The furniture of the 3D images is not included and the equipment of the villas will be indicated in the corresponding building and quality specifications. The energy certification corresponds with the one established in the project in process. All the information and documentation will be provided according to the terms established in the Royal Decree 515/1989 and in the rest of the autonomous or state regulations currently in force that could complement the Mentioned Decree.



Entrance

1
0
-1



## Nº2 VILLA SURYA GROUND FLOOR

### BEDROOMS

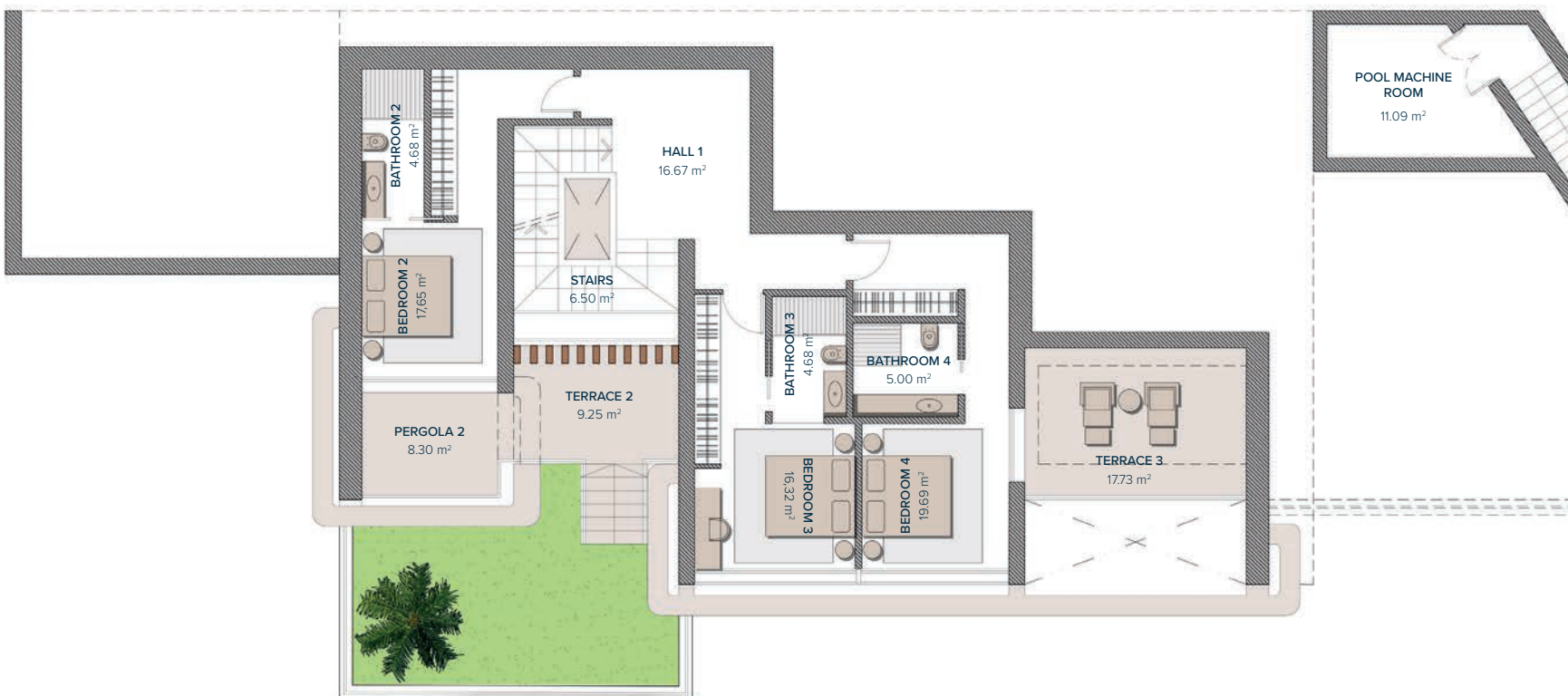
HALL 1	16,67 m <sup>2</sup>
STAIRS	6,50 m <sup>2</sup>
BATHROOM 2	4,68 m <sup>2</sup>
BEDROOM 2	17,65 m <sup>2</sup>
BATHROOM 3	4,68 m <sup>2</sup>
BEDROOM 3	16,32 m <sup>2</sup>
BATHROOM 4	5,00 m <sup>2</sup>
BEDROOM 4	19,69 m <sup>2</sup>
<b>TOTAL</b>	<b>91,85 m<sup>2</sup></b>

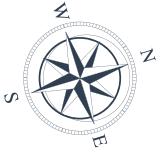
### PERGOLAS & TERRACES

PERGOLA 2	8,30 m <sup>2</sup>
TERRACE 2	9,25 m <sup>2</sup>
TERRACE 3	17,73 m <sup>2</sup>
POOL MACHINE ROOM	11,09 m <sup>2</sup>
<b>TOTAL</b>	<b>46,25 m<sup>2</sup></b>

developed by  
**BRIGHT.**

These images are not contractual but only for illustrative purposes. The images are subject to technical, legal or commercial modifications approved by the project management or the competent authority. The 3D images corresponding to the facades, common elements, and the rest of the spaces are merely indicative and will be subject to verification or Modification in the technical projects. The furniture of the 3D images is not included and the equipment of the villas will be indicated in the corresponding building and quality specifications. The energy certification corresponds with the one established in the project in process. All the information and documentation will be provided according to the terms established in the Royal Decree 515/1989 and in the rest of the autonomous or state regulations currently in force that could complement the Mentioned Decree.

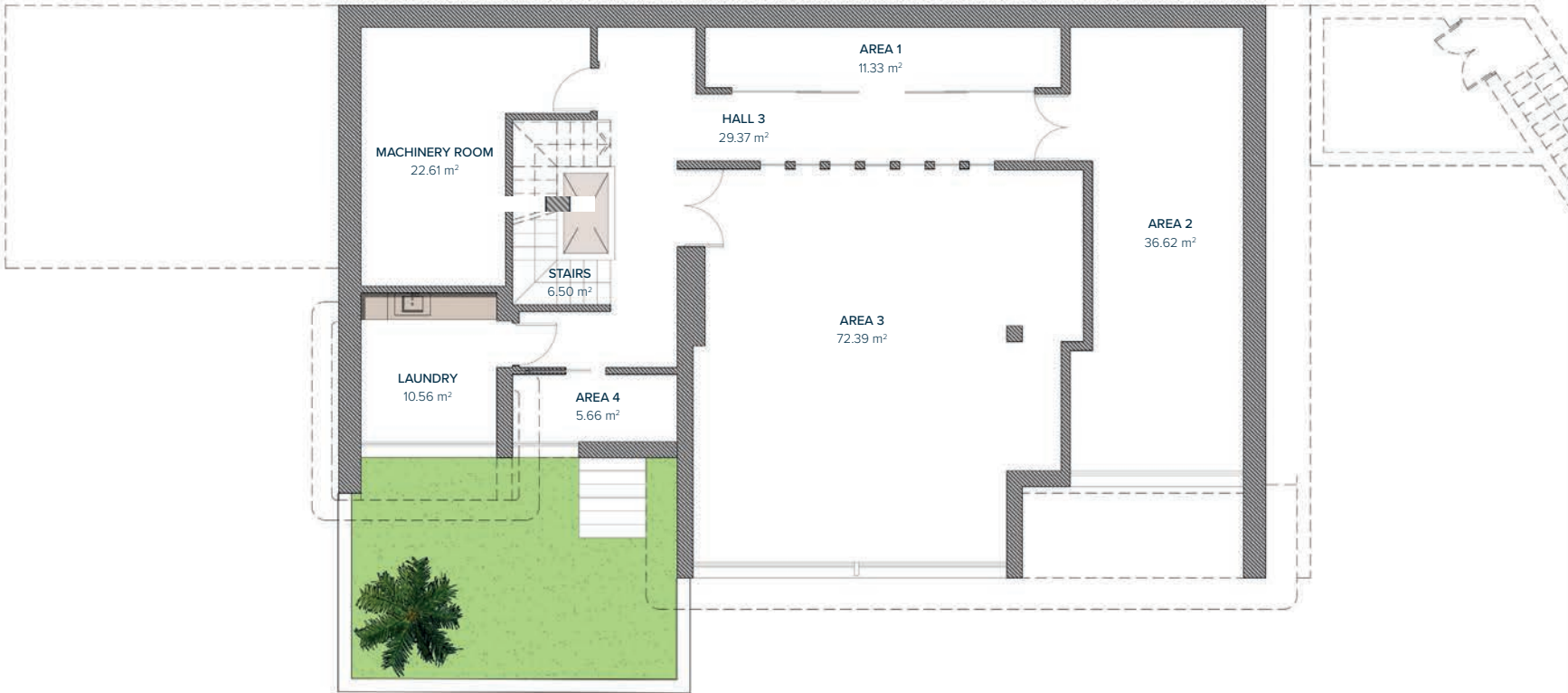




## Nº2 VILLA SURYA

### BASEMENT

HALL 3	29,37 m <sup>2</sup>
AREA 1	11,33 m <sup>2</sup>
AREA 2	36,62 m <sup>2</sup>
AREA 3	72,39 m <sup>2</sup>
AREA 4	5,66 m <sup>2</sup>
STAIRS	6,50 m <sup>2</sup>
MACHINERY ROOM	22,61 m <sup>2</sup>
LAUNDRY	10,56 m <sup>2</sup>
PATIO	1,80 m <sup>2</sup>
<b>TOTAL</b>	<b>196,84 m<sup>2</sup></b>



Entrance

1
0
-1

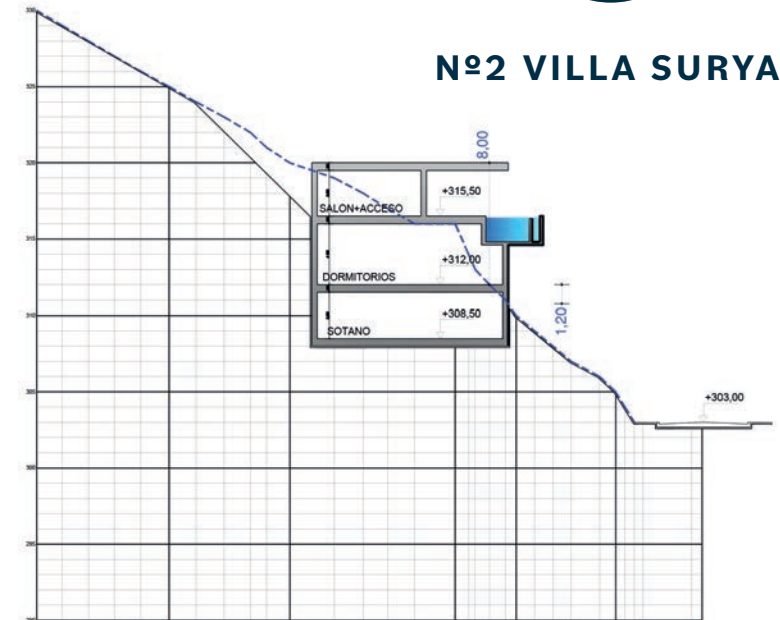
developed by  
**3 R I G H T .**

These images are not contractual but only for illustrative purposes. The images are subject to technical, legal or commercial modifications approved by the project management or the competent authority. The 3D images corresponding to the facades, common elements, and the rest of the spaces are merely indicative and will be subject to verification or Modification in the technical projects. The furniture of the 3D images is not included and the equipment of the villas will be indicated in the corresponding building and quality specifications. The energy certification corresponds with the one established in the project in process. All the information and documentation will be provided according to the terms established in the Royal Decree 515/1989 and in the rest of the autonomous or state regulations currently in force that could complement the Mentioned Decree.





## Nº2 VILLA SURYA



A wide-angle, nighttime photograph of a coastal city. The foreground shows a densely populated urban area with numerous lights from buildings and streets. In the middle ground, a large body of water stretches across the frame, with several small, brightly lit islands or peninsulas visible. The background features a range of dark, silhouetted mountains under a deep blue twilight sky. The overall mood is serene and expansive.

developed by  
**BRIGHT.**

Tel: (+34) 648 981 111 | [www.by-bright.com](http://www.by-bright.com)