



VISTA LAGO
RESIDENCES

developed by
BRIGHT.

N°4

VILLA LARIMAR



Nº4 LARIMAR

Villa Larimar sits on a south-west facing plot that has stunning views across the Mediterranean to Gibraltar. The carefully thought-out orientation of the villa ensures uninterrupted sea views and complete privacy. The villa has a large pool – over 60 metres squared – and very generous terraces that wrap around the entire living area on the ground floor, making the most of the fabulous Marbella climate. In key parts of the villa the windows disappear into the walls, framing the undisturbed, panoramic views. There are three spacious ensuite bedrooms, with the Master Suite designed along the lines of a 5-star hotel with a walk-in wardrobe and its own private terrace. Built over three floors with parking space for up to 4 cars in the garage, this is a splendid family home.

developed by
3RIGHT.





Nº4 LARIMAR

GROUND FLOOR	116,17 m ²
FIRST FLOOR	143,12 m ²
BASEMENT	306,59 m ²
TOTAL	565,88 m²
TERRACES	35,02 m ²
PERGOLAS	82,64 m ²
COMUN AREAS	8,70 m ²
TOTAL CONSTRUCTED	692,24 m²

PLOT	1.577,00 m²
GARDEN	39,59 m ²
SWIMMING POOL	48.03 m ²
TOTAL USEFUL AREA	533,19 m²
DECREE 218/2005	

developed by
BRIGHT.

These images are not contractual but only for illustrative purposes. The images are subject to technical, legal or commercial modifications approved by the project management or the competent authority. The 3D images corresponding to the facades, common elements, and the rest of the spaces are merely indicative and will be subject to verification or Modification in the technical projects. The furniture of the 3D images is not included and the equipment of the villas will be indicated in the corresponding building and quality specifications. The energy certification corresponds with the one established in the project in process. All the information and documentation will be provided according to the terms established in the Royal Decree 515/1989 and in the rest of the autonomous or state regulations currently in force that could complement the Mentioned Decree.



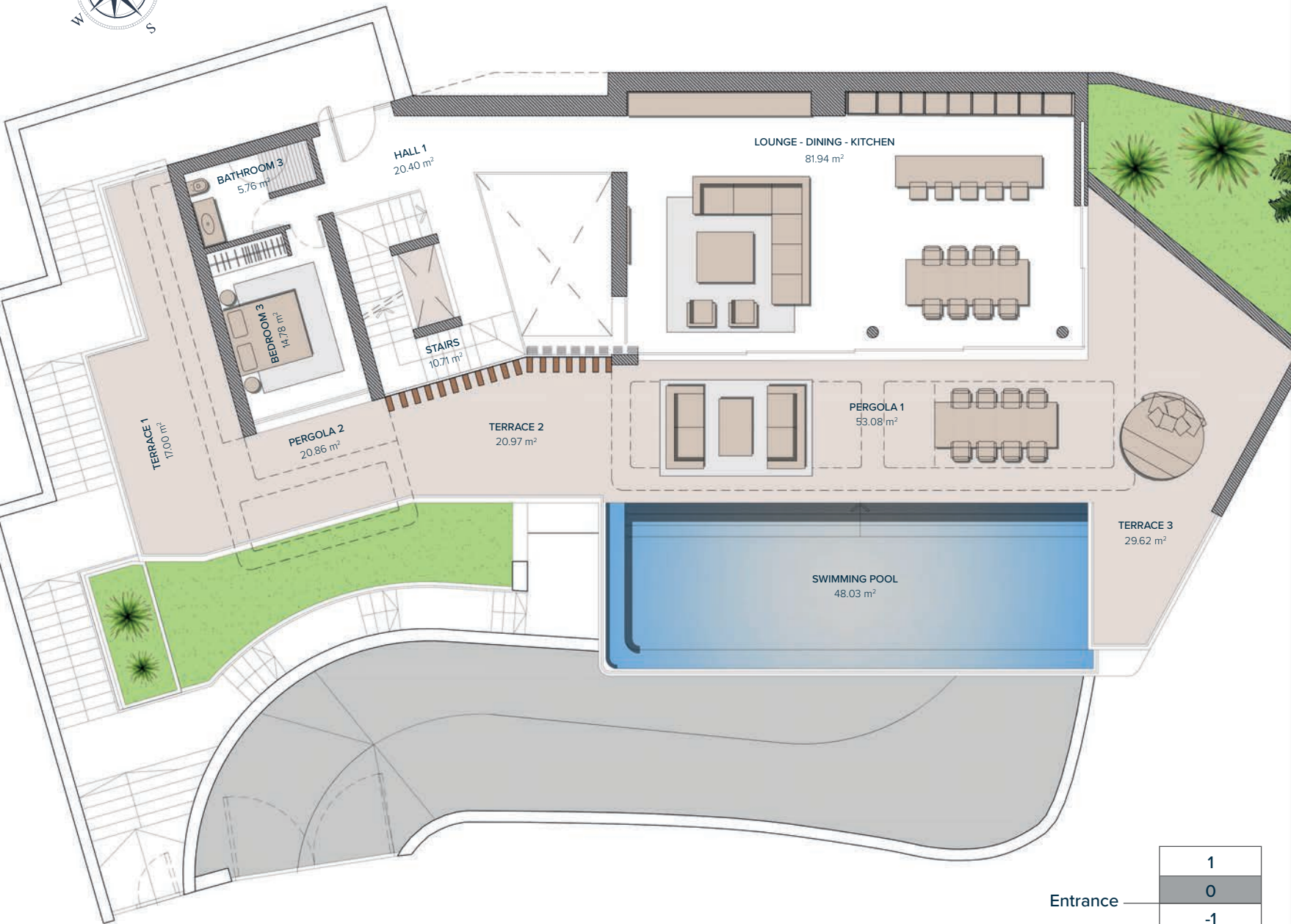
Nº4 LARIMAR GROUND FLOOR

LIVING AREA

HALL 1	20,40 m ²
STAIRS	10,71 m ²
LOUNGE-DINING-KITCHEN	81,94 m ²
BATHROOM 3	5,76 m ²
BEDROOM 3	14,78 m ²
TOTAL	133,59 m²

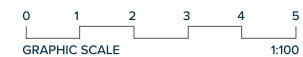
ACCESS & TERRACES

TERRACE 1	17,00 m ²
TERRACE 2	20,97 m ²
TERRACE 3	29,62 m ²
PERGOLA 1	24,07 m ²
PERGOLA 2	55,30 m ²
TOTAL	146,69 m²



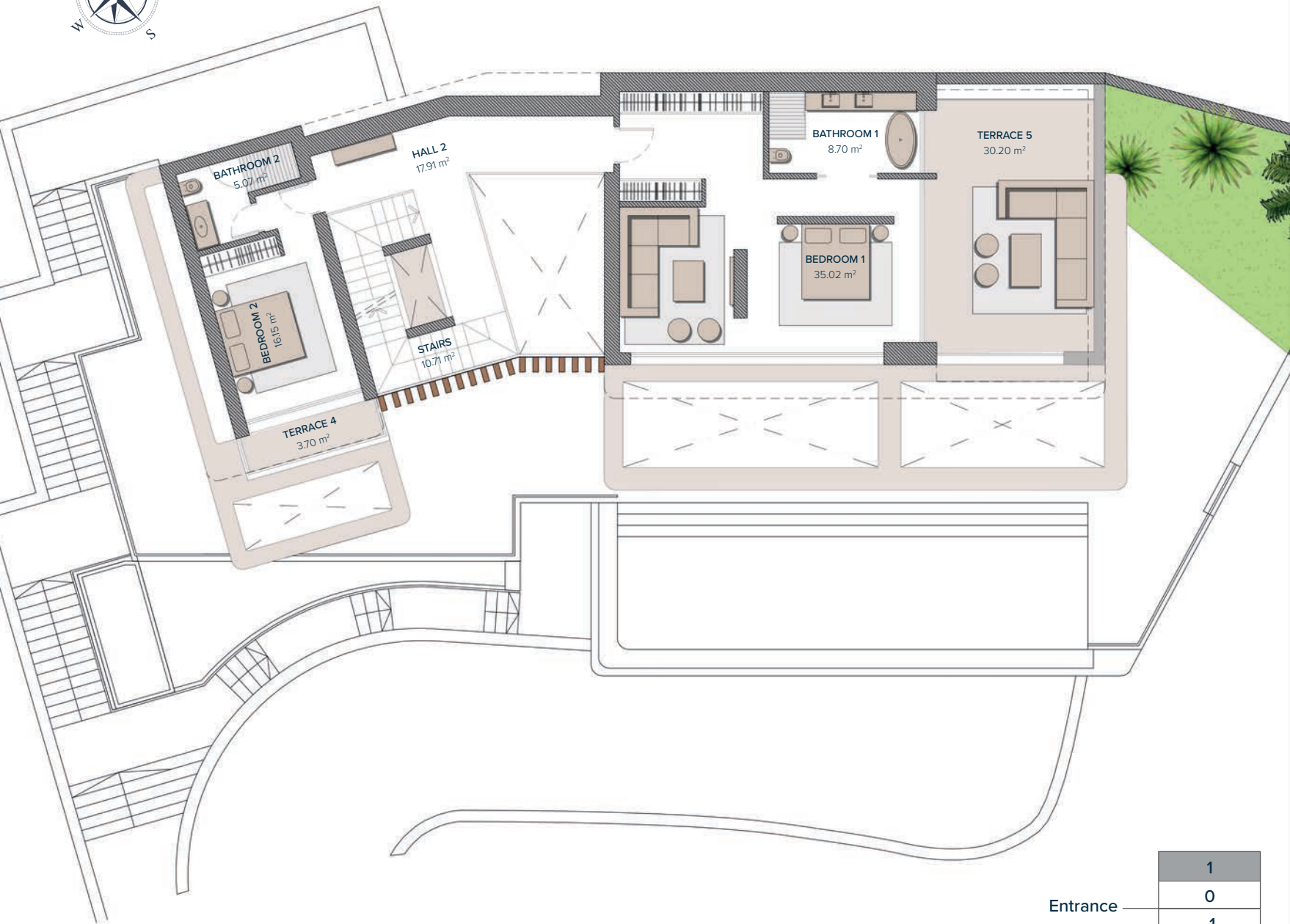
Entrance

1
0
-1



developed by
BRIGHT.

These images are not contractual but only for illustrative purposes. The images are subject to technical, legal or commercial modifications approved by the project management or the competent authority. The 3D images corresponding to the facades, common elements, and the rest of the spaces are merely indicative and will be subject to verification or Modification in the technical projects. The furniture of the 3D images is not included and the equipment of the villas will be indicated in the corresponding building and quality specifications. The energy certification corresponds with the one established in the project in process. All the information and documentation will be provided according to the terms established in the Royal Decree 515/1989 and in the rest of the autonomous or state regulations currently in force that could complement the Mentioned Decree.



Nº4 LARIMAR FIRST FLOOR

BEDROOMS

HALL 2	17,91 m ²
STAIRS	10,71 m ²
BEDROOM 2	16,15 m ²
BATHROOM 2	5,07 m ²
BEDROOM 1	35,02 m ²
BATHROOM 1	8,70 m ²
TOTAL	93,56 m²

ACCESS & TERRACES

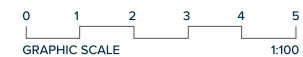
TERRACE 4	3,70 m ²
TERRACE 5	30,20 m ²
TOTAL	33,90 m²

developed by
BRIGHT.

These images are not contractual but only for illustrative purposes. The images are subject to technical, legal or commercial modifications approved by the project management or the competent authority. The 3D images corresponding to the facades, common elements, and the rest of the spaces are merely indicative and will be subject to verification or Modification in the technical projects. The furniture of the 3D images is not included and the equipment of the villas will be indicated in the corresponding building and quality specifications. The energy certification corresponds with the one established in the project in process. All the information and documentation will be provided according to the terms established in the Royal Decree 515/1989 and in the rest of the autonomous or state regulations currently in force that could complement the Mentioned Decree.

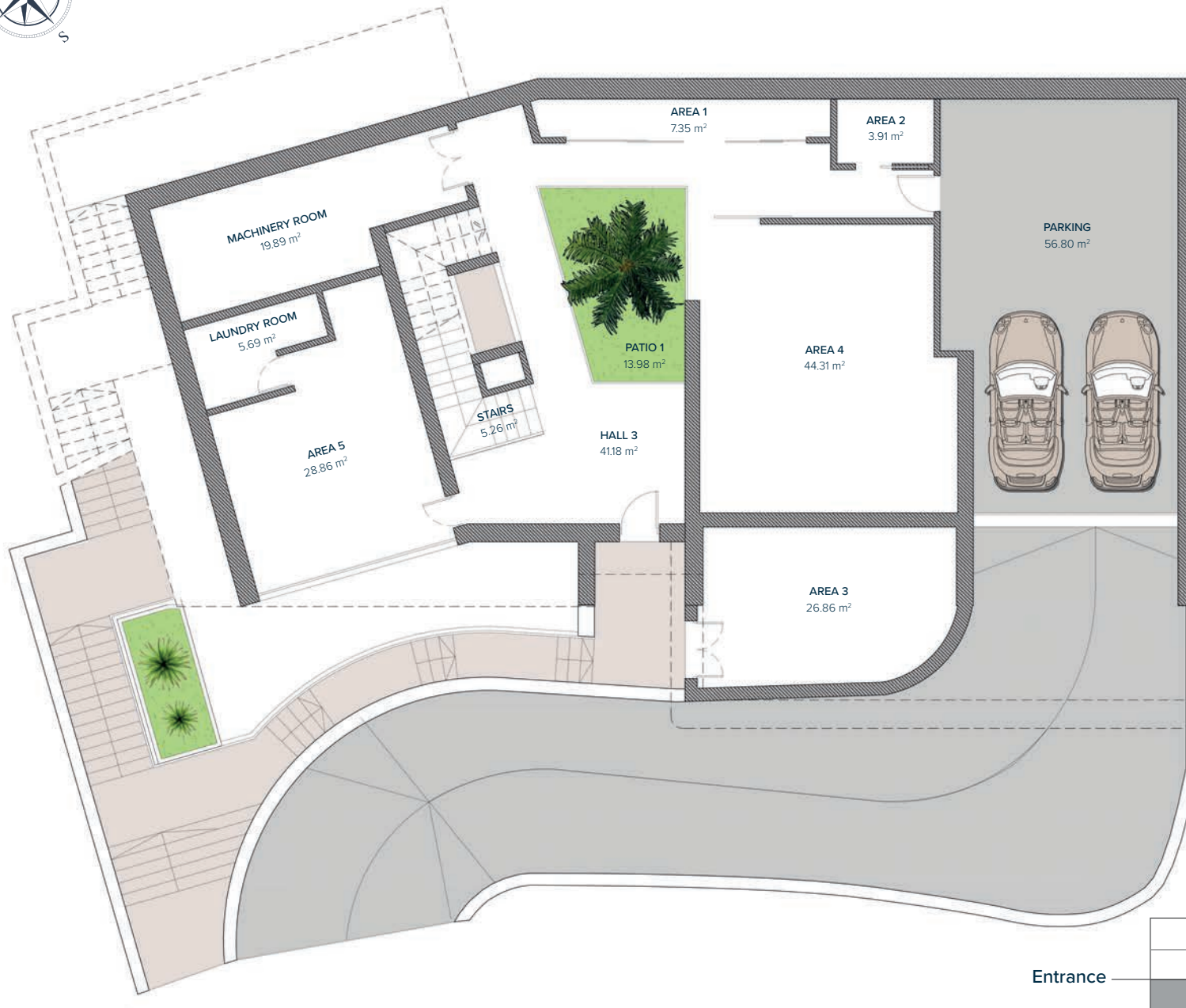
1
0
-1

Entrance





Nº4 LARIMAR BASEMENT



BASEMENT

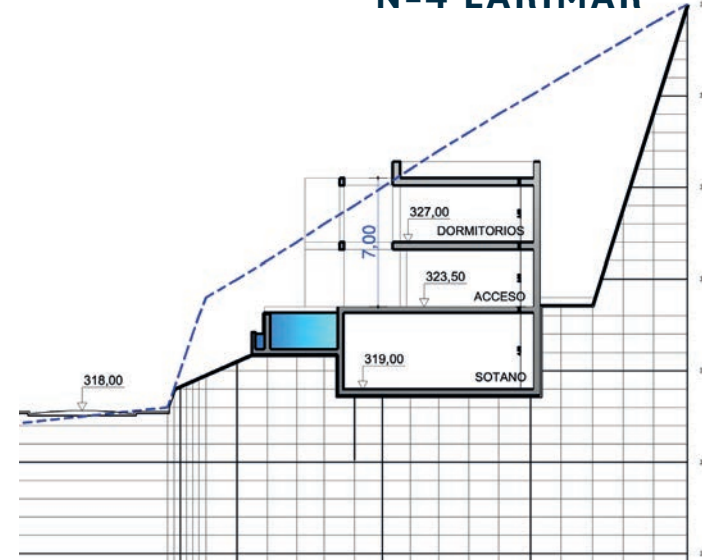
HALL 3	41,18 m ²
STAIRS	5,26 m ²
AREA 1	7,35 m ²
AREA 2	3,91 m ²
AREA 3	26,86 m ²
AREA 4	44,31 m ²
AREA 5	28,86 m ²
LAUNDRY ROOM	5,69 m ²
MACHINERY ROOM	19,89 m ²
PARKING	56,80 m ²
PATIO 1	13,98 m ²
PATIO 2	1,80 m ²
TOTAL	255,89 m²

developed by
BRIGHT.

These images are not contractual but only for illustrative purposes. The images are subject to technical, legal or commercial modifications approved by the project management or the competent authority. The 3D images corresponding to the facades, common elements, and the rest of the spaces are merely indicative and will be subject to verification or Modification in the technical projects. The furniture of the 3D images is not included and the equipment of the villas will be indicated in the corresponding building and quality specifications. The energy certification corresponds with the one established in the project in process. All the information and documentation will be provided according to the terms established in the Royal Decree 515/1989 and in the rest of the autonomous or state regulations currently in force that could complement the Mentioned Decree.



Nº4 LARIMAR



developed by
BRIGHT.

Tel: (+34) 648 981 111 | www.by-bright.com